



Installation Manual

Version: 0.2.20

Last revision: 09.10.2012

Content

1. How to use this Manual?	4
2. Overview	5
2.1 Features	5
2.2 1.2 System Components	6
a) Lookeen Server Indexer Service (LSIS)	6
b) Lookeen Server Gateway (LSGW)	6
c) Lookeen Server Management-Console (LSMC)	6
3. Hardware requirements	7
4. Software requirements	8
5. Installation of the complete Lookeen Server Software	9
5.1 Step 1: Create Lookeen Indexing User (LIU)	9
5.2 Step 2: Enable Impersonation for LIU	9
a) Exchange Server 2007:	9
b) Exchange Server 2010:	10
5.3 Step 3: Install Setup.exe	10
5.4 Step 4: Grant Directory Access for LIU and IIS AppPool	11
5.5 Step 5: Create Lookeen Server Indexer Service (LSIS)	12
5.6 Step 6: Create Lookeen Server Gateway (LSGW)	14
a) Create application	14
b) Edit authentication method	14
c) Get the LSGW URL	15
5.7 Step 7: Configuration of the Lookeen Server with the Lookeen Server Management Console (LSMC)	15
a) Configure the Lookeen Index Path (LIP)	16
b) Configure Gateway URL	17
c) Configure Exchange Web Service URL	18
d) Include/Exclude Users from indexing	19
e) Add local files to your Lookeen Server Index	20
f) Exclude folders from index (optional)	21
g) Disable attachment indexing (optional)	21

h) Test your LSGW and your Index	22
6. Running the Server.....	23
a) Test Mode.....	23
b) Production Mode.....	24
7. Supervision of the Index.....	26
8. Connection to the Lookeen clients.....	27
8.1 Configuration of the Lookeen Client without Group Policies	27
8.2 Configuration of the Lookeen Client with Group Policy.....	28
a) Enable Server (LS1).....	28
b) Set the Gateway URL (LS2)	28
c) Set the Settings read only (LS3).....	28
d) Set Server timeout (LS4).....	28
9. Increase the Indexer Performance.....	29
10. FAQs.....	30
11. Glossary.....	32
12. Trademarks.....	33

1. How to use this Manual?

This manual will guide you through the installation and configuration of the Lookeen Server.

Chapter 2 (Overview) provides you with an overview of the functionalities of the Lookeen Server and its latest [features](#). In this chapter, the structure of its [system components](#) – explanations of the Gateway (LSGW), Indexer Service (LSIS) and Management Console (LSMC) – will be provided.

Chapters 3 & 4 cover all of the [soft-](#) and [hardware requirements](#). The manual will guide you through the [actual installation](#) of the Lookeen Server in chapter 5. In order to install the Lookeen Server Software you need to take care of the installation and configuration of all three system components (LSIS, LSGW, LSMC) *separately*. Therefore you'll be asked to follow the installation step-by-step. Steps 1 through 4 will explain preparation and impersonation of the [Lookeen Indexing User \(LIU\)](#) and the installation of the setup.exe. file. Steps 5 through 7 will help you install, configure, and test all three of the Lookeen Server system components.

After having installed the Lookeen Server, you might not be likely to run a new software in your enterprise without having tested it, this is why this manual helps you to set up a [testing mode](#) as explained in chapter 6. Also, you'll need to be able to supervise the running index from time to time. Chapter 7 will explain how to use the [Supervision](#) settings while running the Lookeen Server on your company network.

Eventually, you'll need to [connect every Lookeen client](#) in your company to the new Lookeen Server. This is covered in chapter 8. If you're looking for some tips on how to increase the performance of your Lookeen Server Index, please consult chapter 9. For further questions and answers, the FAQs are listed in chapter 10. If you cannot find the answers you're searching for, please contact us at support@lookeenserver.com.

2. Overview

The Lookeen Server provides centralized access to enterprise- wide information sources for Exchange Server based data and file based data. The Lookeen Server works seamlessly with the Lookeen client. In combination with Lookeen clients, the server allows users to search files, e-mails, public folders, contacts, appointments and tasks quickly and effectively throughout the entire enterprise network without the need of client-based indexing. The centralized indexing reduces the load and traffic on Exchange Servers and networks, conserving processor and memory resources on both servers and clients.

If a user starts a search query, the gateway grants access to the user to all relevant search results in the central index, keeping in mind the users Active Directory permissions. Individual users can now search personal and external sources simultaneously within their own Lookeen index authority.

2.1 Features

- *Create and manage one centralized index, that can be accessed with Lookeen Enterprise Edition clients*
- *Full administrative control over indexing volumes, structures, and schedules*
- *Centralizes control by group policies*
- *Easy installation of both servers and clients*
- *Highest security by storing the Windows permission (Active Directory rights) structure in the index itself*
- *Encrypted indices and communication*
- *Indexing Exchange Server 2007, 2010 (Public Folders and Private Mailboxes)*
- *Indexing network files*
- *Time-controlled central indexing*
- *Seamless integration with the Lookeen client (Enterprise Edition)*
- *High availability, due to running as a web service*

2.2 System Components

The Lookeen Server system consists of three main components: the Lookeen Server Indexer Service (LSIS), the Lookeen Server Gateway (LSGW) and the Lookeen Server Management console (LSMC).

a) Lookeen Server Indexer Service (LSIS)

The LSIS is a Windows service, which constantly indexes all configured data sources for all configured users and writes them to a centralized index. The LSIS sources are Exchange Server based Public Folders (PF) and Private Mailboxes (PM) as well as Local Files (LF) and Network Drives. The LSIS indexes all data together with their user permissions.

All three data sources are indexed simultaneously in so called “indexing runs”. When a run is finished, the next run starts after a certain time from the beginning (e.g. 15 seconds).

“Watermarks” show the LSIS, what data is already indexed and which data is new and needs to be indexed. User changes will be detected at the start of the next indexing run (“delta indexing”).

By default the LSIS indexes every user who is listed in the active directory. New users will be indexed as soon as they appear - with no further need to change the settings.

b) Lookeen Server Gateway (LSGW)

The LSGW is a .Net 4.0 web application (WCF service). The LSGW handles search requests of the connected Lookeen clients, performs the index search and returns the search results to the requesting clients.

c) Lookeen Server Management-Console (LSMC)

The LSMC is a Windows application for the Lookeen Server Administrator to configure and test the server settings.

3. Hardware requirements

Component	Requirement
Processor	<ul style="list-style-type: none"> • Minimum: 1 GHz (x86 processor) or 1.4 GHz (x64 processor) • Recommended: 2 GHz or faster
Memory	<ul style="list-style-type: none"> • Minimum: 1 GB RAM • Recommended: 2 GB RAM or greater

4. Software requirements

- Windows Server 2003 or higher,
 - Domain integrated
 - IIS installed + Installed module “Windows authentication”
 - No Domain Controller role
- Exchange 2007 SP1 or higher (2003 is currently not supported)
- Net Framework 4.0 (full). Download link:
<http://www.microsoft.com/download/en/details.aspx?id=17851>
- Lookeen Client, Version 8, Enterprise Edition (version 8.2.1.4950 or newer)

5. Installation of the complete Lookeen Server Software

In order to install the Lookeen Server Software you need to take care of the installation and configuration of all three system components (LSIS, LSGW, LSMC) separately. Please follow the following instructions step-by-step.

- Step 1 to Step 4 – Preparation and impersonation of the Lookeen Indexing User (LIU) and Installation of the setup.exe.
- Step 5 to Step 7 – Installation and configuration of the three Lookeen Server system components.

5.1 Step 1: Create Lookeen Indexing User (LIU)

Create the LIU (a dedicated domain user) in your Active Directory Control Panel.

Example LIU: "lookeenserver_acc"

5.2 Step 2: Enable Impersonation for LIU

If you want to index your Exchange Server through the Lookeen Server, you need to enable "Impersonation" for your LIU.

Please note: For security reasons the LIU exchange impersonator shouldn't be a member of your administrator group.

a) Exchange Server 2007:

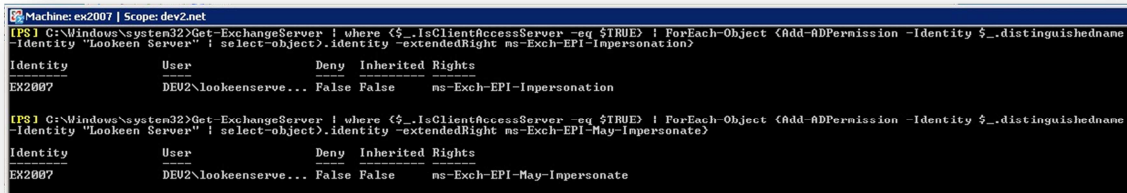
If you use Exchange Server 2007, you need to add **two** new management roles for the LIU account (e.g. "lookeenserver_acc"). To achieve this, use the Exchange Management Shell. The user identity means the first and last name of your LIU account.

```
Get-ExchangeServer | where {$_.IsClientAccessServer -eq $TRUE} |
ForEach-Object {Add-ADPermission -Identity $_.distinguishedname -User
(Get-User -Identity "Lookeen Server" | select-object).identity -
extendedRight ms-Exch-EPI-Impersonation}
```

And

```
Get-ExchangeServer | where {$_.IsClientAccessServer -eq $TRUE} |
ForEach-Object {Add-ADPermission -Identity $_.distinguishedname -User
```

```
(Get-User -Identity "Lookeen Server" | select-object).identity -
extendedRight ms-Exch-EPI-May-Impersonate}
```



Screen 1 - Exchange Server 2007

b) Exchange Server 2010:

If you use Exchange Server 2010, you only need to add **one** management role to the LIU Account. To achieve this, use the Exchange Management Shell and follow these instructions:

```
New-ManagementRoleAssignment -Name:LookeenImpersonate
-Role:Applicationimpersonation -User:lookeenserver_acc
```



Screen 2 - Exchange Server 2010

More information: [http://msdn.microsoft.com/en-us/library/bb204095\(v=exchg.140\).aspx](http://msdn.microsoft.com/en-us/library/bb204095(v=exchg.140).aspx)

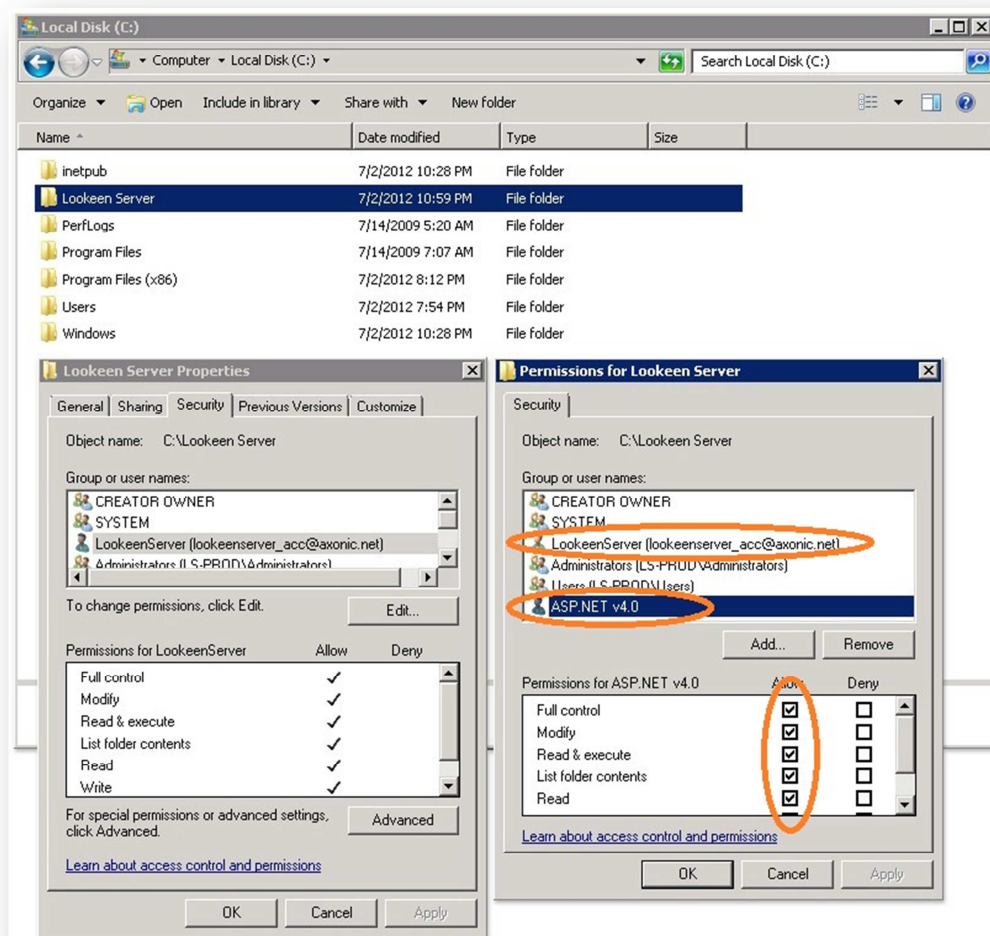
5.3 Step 3: Install Setup.exe

Install the LookeenServer.X.X.X.XXX.exe with the setup package to a certain directory. This will be the *Lookeen Base Directory* (LBD), e.g. "C:\LookeenServer".

5.4 Step 4: Grant Directory Access for LIU and IIS AppPool

Please note: The “IIS AppPool\ASP.NET v4.0” user is a windows predefined local user of your Lookeen Server machine.

Grant the LIU account and the “IIS AppPool\ASP.NET v4.0”-users write and change access permission for your specified directory



Screen 3 - Grant Directory Access for LIU and IIS AppPool

- In the next steps, you are going to create and configure the three system components of the Lookeen Server.

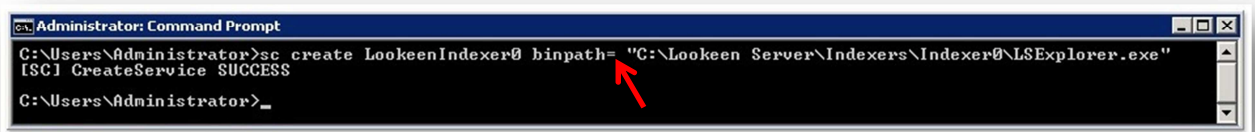
5.5 Step 5: Create Lookeen Server Indexer Service (LSIS)

Create a new Windows Service. In the command shell create a new Windows Service which calls the “LSExplorer.exe”. Please choose a significant name, for example: “LookeenIndexer0”.

Please enter in the command line:

```
sc create LookeenIndexer0 binpath= "C:\Lookeen
Server\Indexers\Indexer0\LSExplorer.exe"
```

Important: Make sure you have a space after binpath=" "



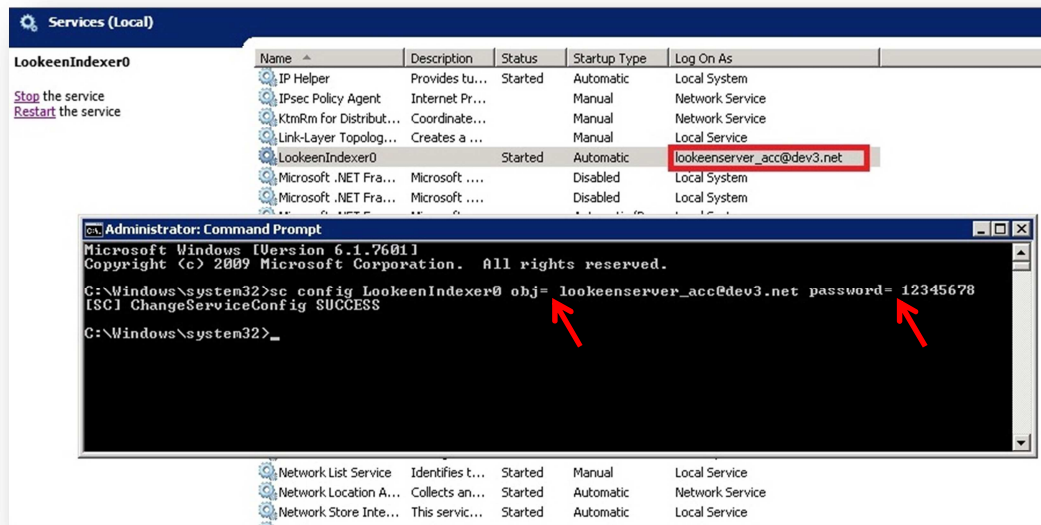
Screen 4 - Space after binpath=" "

To make sure, the indexer runs with the correct permissions, you need to change the Service User from “Local System” to your LIU. To achieve this, you can either use the Windows command shell or GUI (graphical user interface).

If you want to use the shell, type this command line:

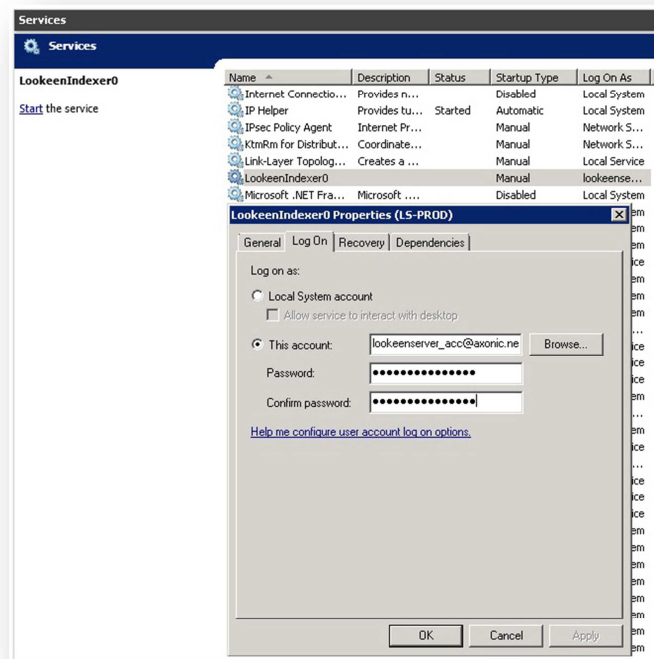
```
sc config LookeenIndexer0 obj= lookeenserver_acc@<yourdomain>
password= <yourPassword>
```

Important: Make sure you have a space after obj=" " and password=" "



Screen 5 - CMD command: Please ensure the space after obj=" " and password=" "

If you want to use the GUI, please open the properties of the new created service ("LookeeIndexer0"). Switch to the "Log On" tab to change the executing user of the service to the LIU account ("lookeeserver_acc"). Please do not start the service yet.



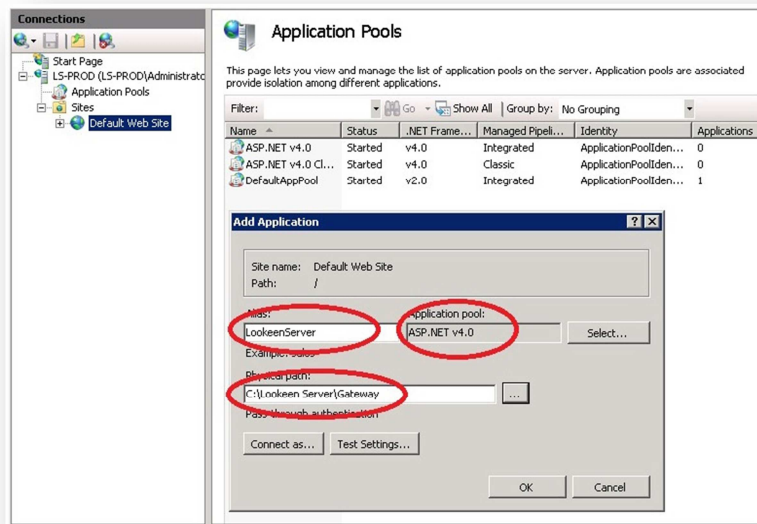
Screen 6 - LookeeIndexer0 Properties

5.6 Step 6: Create Lookeen Server Gateway (LSGW)

The Gateway is the connecting component between the Lookeen clients and the Lookeen index.

a) Create application

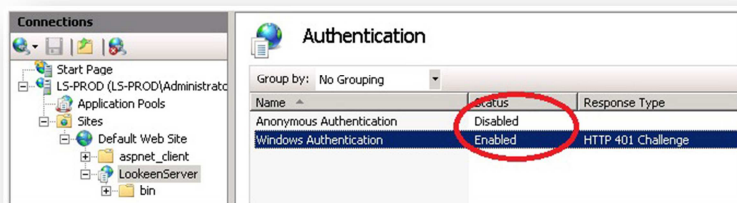
Open the IIS management console and create a new application for the Lookeen Server Gateway. Specify the name of your gateway application. Make sure you selected the “ASP.NET v4.0” application pool and the correct physical path. For example “C:\Lookeen Server\Gateway”. If you cannot find the application pool “ASP .NET v4.0”, please check the software requirement section in this document.



Screen 7 - Application Pool settings

b) Edit authentication method

The Lookeen Server Gateway uses the ADS token. So please make sure, only the “windows authentication” is activated. If you can’t find “windows authentication”, you need to add this module to your Windows web server role.

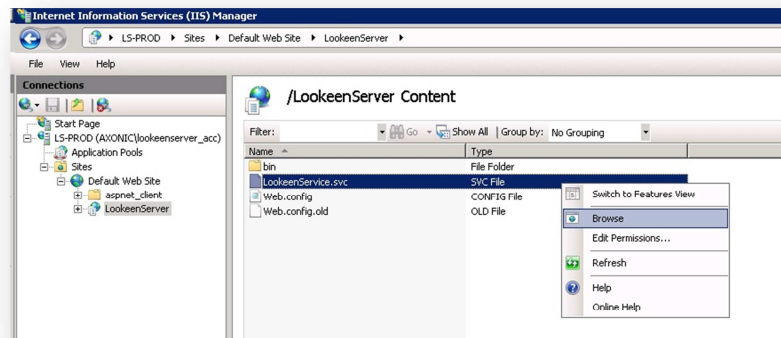


Screen 8 - Authentication Method for the Lookeen Server

c) Get the LSGW URL

To get the LGSW URL, select the newly created application in the IIS-Manager --> switch to content view and right click to browse the "LookeenService.svc".

Example URL = <http://lookeen-server.yourdomain.com/LookeenServer/LookeenService.svc>.



Screen 9 – Get the LGSW Url in your /LookeenServer Content

This URL will be needed to configure the Lookeen clients (explained later).

It should look like this (IE recommended).



Screen 10 - Lookeen Server Service

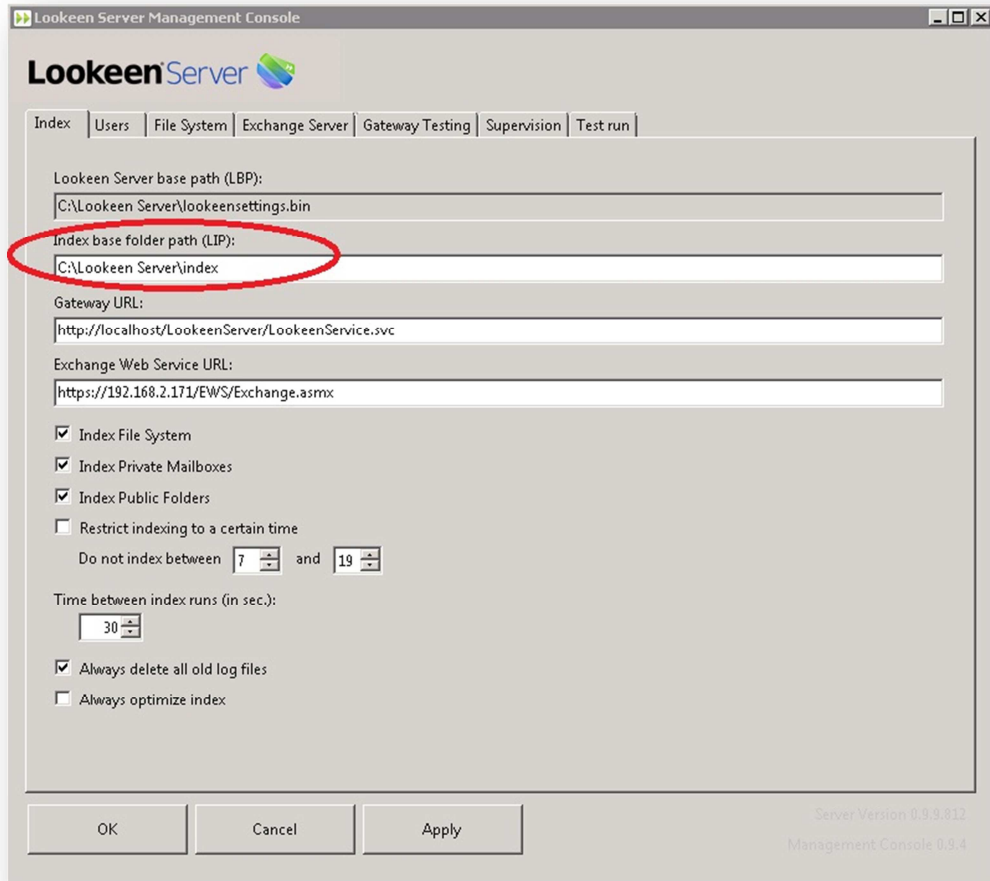
5.7 Step 7: Configuration of the Lookeen Server with the Lookeen Server Management Console (LSMC)

In the Lookeen Server management console (LSMC) you can change all important settings related to the indexing process. Open the LSMC, located in the management folder of the LBD directory:

For Example in "C:\LookeenServer\ManagementConsole\LSManagementConsole.exe "

a) Configure the Lookeen Index Path (LIP)

In this step you need to specify a location for the Lookeen index. Depending on the volume of the indexed data the Lookeen index needs enough space on the disc (up to 100GB).



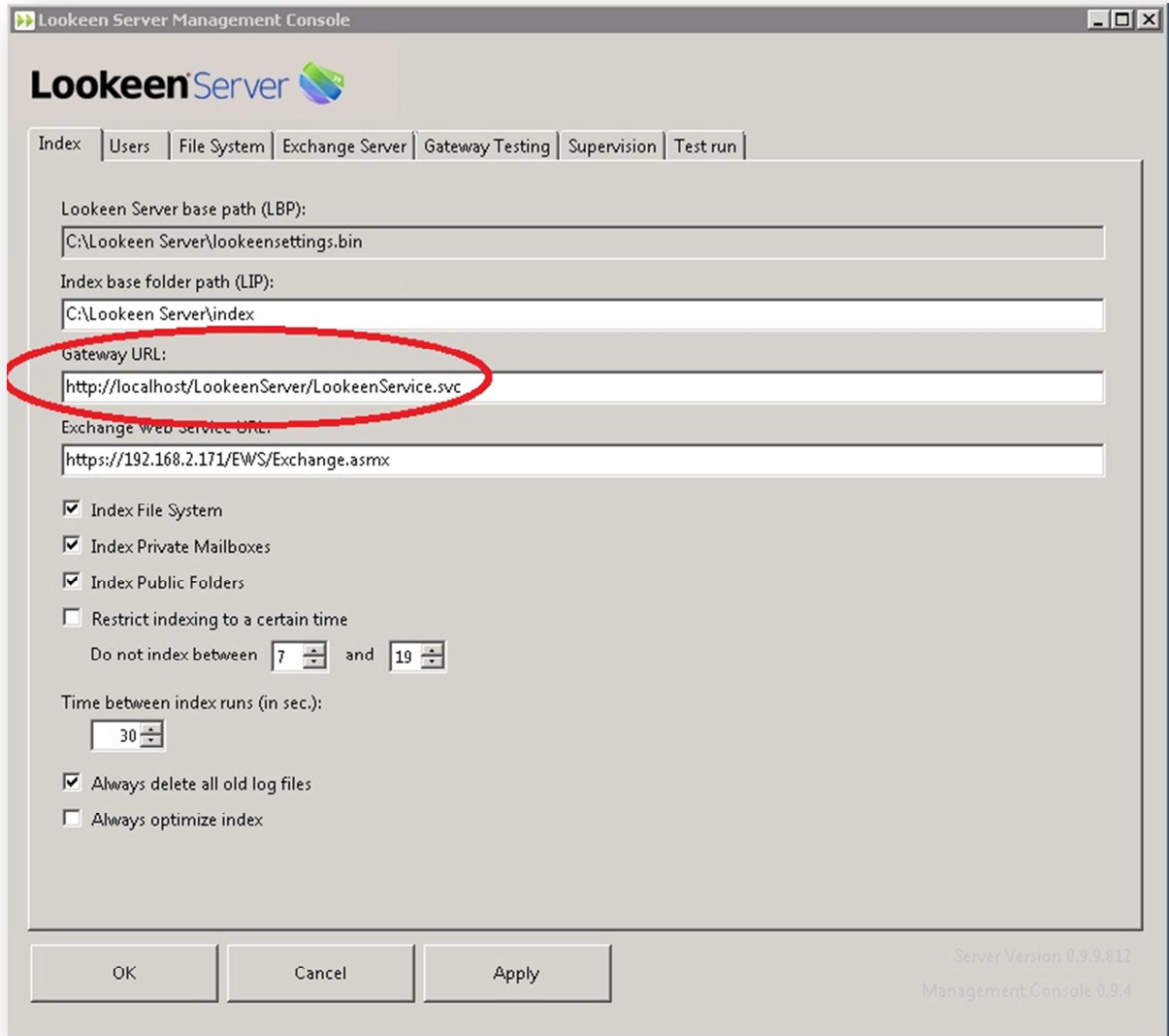
The screenshot shows the 'Lookeen Server Management Console' window with the 'Index' tab selected. The 'Index base folder path (LIP):' field is circled in red and contains the text 'C:\Lookeen Server\index'. Other fields include 'Lookeen Server base path (LBP):' with 'C:\Lookeen Server\lookeensettings.bin', 'Gateway URL:' with 'http://localhost/LookeenServer/LookeenService.svc', and 'Exchange Web Service URL:' with 'https://192.168.2.171/EWS/Exchange.asmx'. There are also checkboxes for 'Index File System', 'Index Private Mailboxes', 'Index Public Folders', 'Restrict indexing to a certain time', 'Always delete all old log files', and 'Always optimize index'. The 'Time between index runs (in sec.):' is set to 30. At the bottom, there are 'OK', 'Cancel', and 'Apply' buttons, and the version information 'Server Version 0.9.9.812 Management Console 0.9.4'.

Screen 11 - Configure the Lookeen Index Path (LIP)

b) Configure Gateway URL

In this step you need to specify your Lookeen Server Gateway URL. To get your Gateway URL see chapter 4.6.c.

Example URL: <http://lookeen-server.yourdomain.com/LookeenServer/LookeenService.svc>

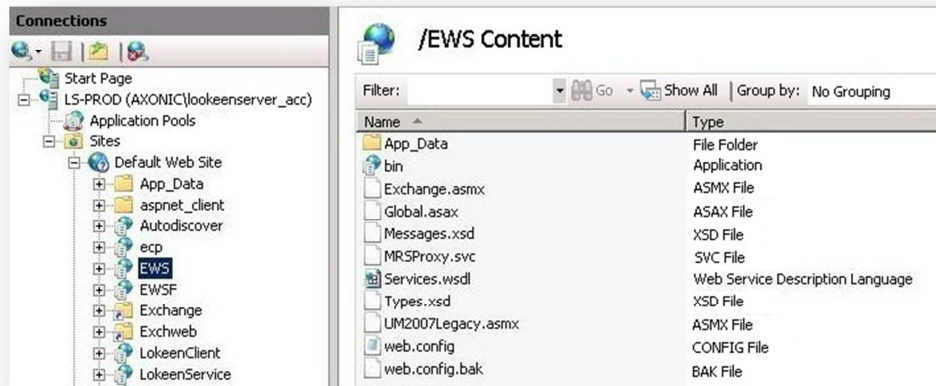


The screenshot shows the 'Lookeen Server Management Console' window. The 'Index' tab is selected. The 'Gateway URL' field is highlighted with a red circle and contains the text 'http://localhost/LookeenServer/LookeenService.svc'. Other fields include 'Lookeen Server base path (LBP): C:\Lookeen Server\lookeensettings.bin', 'Index base folder path (LIP): C:\Lookeen Server\index', and 'Exchange Web Service URL: https://192.168.2.171/EWS/Exchange.asmx'. There are also checkboxes for 'Index File System', 'Index Private Mailboxes', 'Index Public Folders', 'Restrict indexing to a certain time', 'Always delete all old log files', and 'Always optimize index'. The 'Time between index runs (in sec.):' is set to 30. The bottom of the window has 'OK', 'Cancel', and 'Apply' buttons, and the version information 'Server Version 0.9.9.812' and 'Management Console 0.9.4'.

Screen 12 - Configure Gateway URL

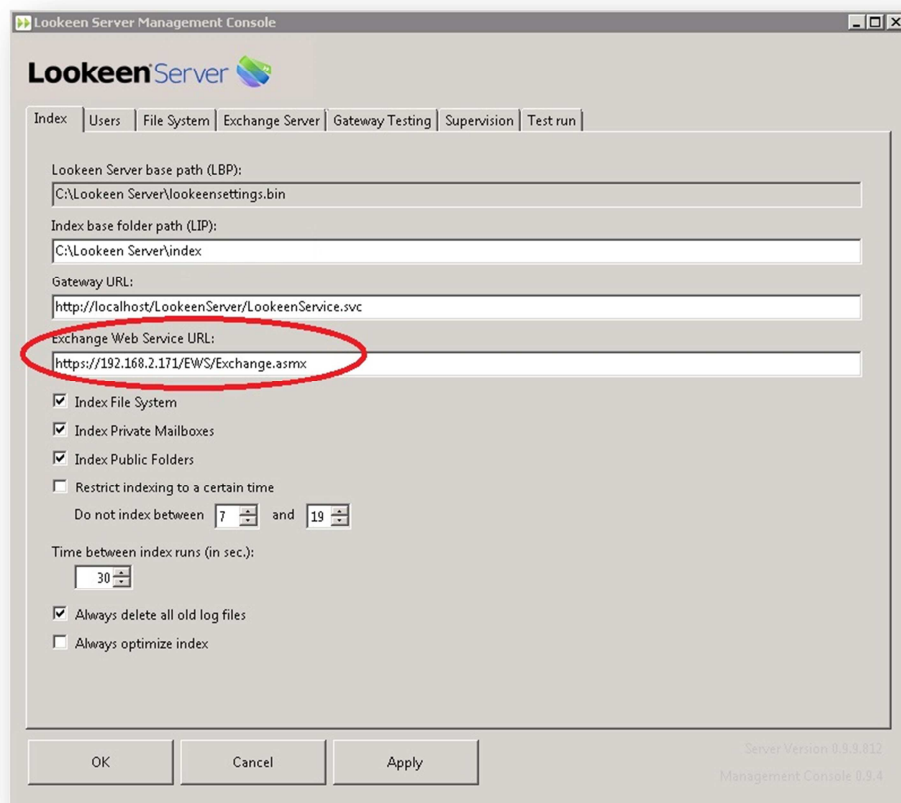
c) Configure Exchange Web Service URL

If you want to index Exchange Server data like Public Folders or Private Mailboxes, you need to specify the URL of your Exchange Server endpoint. The path to “Exchange.asmx” of Exchange Web Services (EWS) can be found in the IIS-Manager of your Exchange Server.



Screen 13 – IIS-Manager /EWS Content

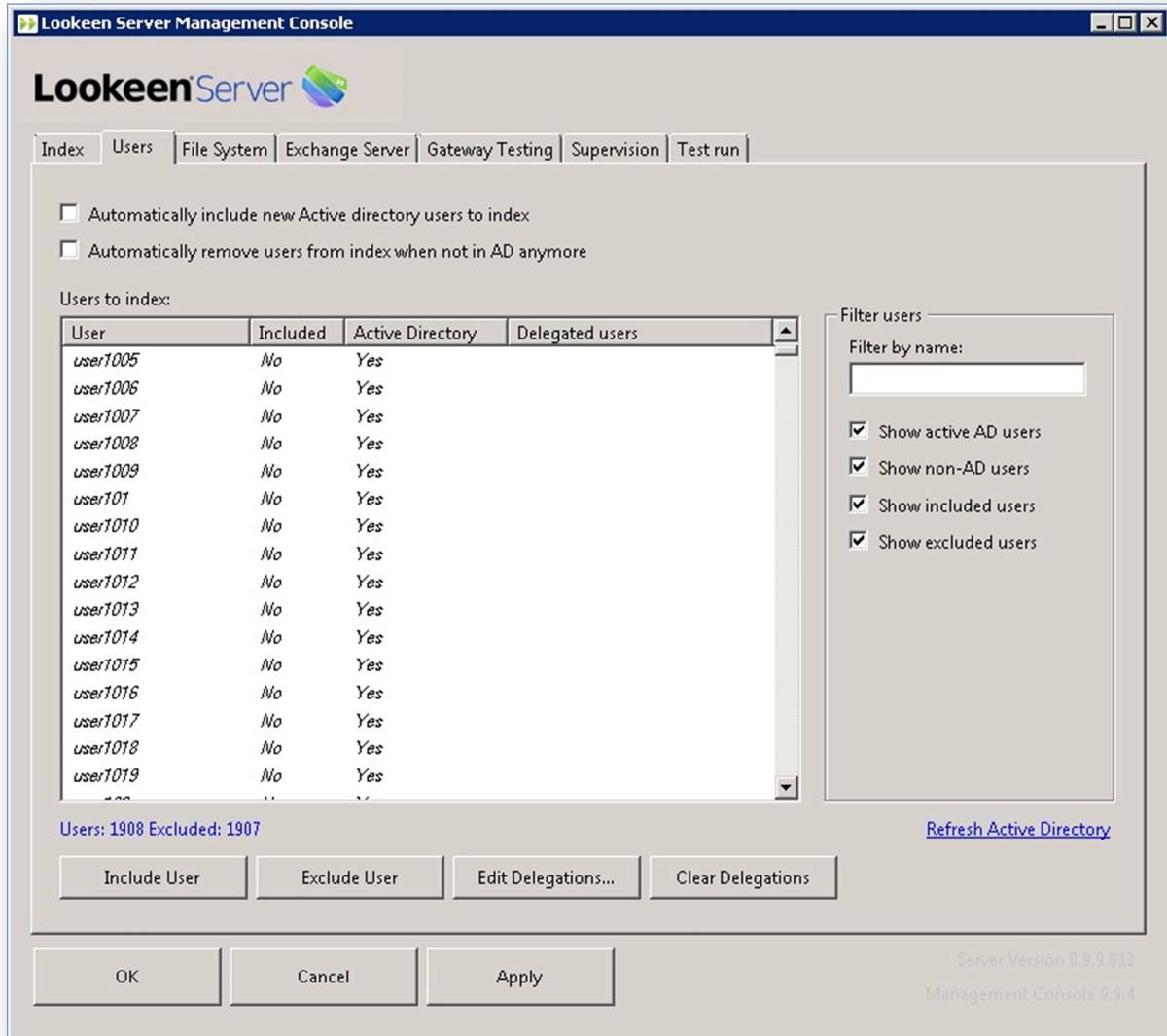
Example: <https://localhost/EWS/Exchange.asmx>



Screen 14 - Configure Exchange Web Service URL

d) Include/Exclude Users from indexing

In the “Users” tab, you can include the users that should be indexed by the Lookeen Server. All blacklisted users will be excluded from the indexing process. To be indexed, a user needs to be listed in the Active Directory of the current Windows Domain. You can choose if you want to add and remove indexed users manually or automatically.



Lookeen Server Management Console

LookeenServer

Index | **Users** | File System | Exchange Server | Gateway Testing | Supervision | Test run

☐ Automatically include new Active directory users to index

☐ Automatically remove users from index when not in AD anymore

Users to index:

User	Included	Active Directory	Delegated users
user1005	No	Yes	
user1006	No	Yes	
user1007	No	Yes	
user1008	No	Yes	
user1009	No	Yes	
user101	No	Yes	
user1010	No	Yes	
user1011	No	Yes	
user1012	No	Yes	
user1013	No	Yes	
user1014	No	Yes	
user1015	No	Yes	
user1016	No	Yes	
user1017	No	Yes	
user1018	No	Yes	
user1019	No	Yes	

Filter users

Filter by name:

☐ Show active AD users

☒ Show non-AD users

☒ Show included users

☒ Show excluded users

Users: 1908 Excluded: 1907 [Refresh Active Directory](#)

Include User | Exclude User | Edit Delegations... | Clear Delegations

OK | Cancel | Apply

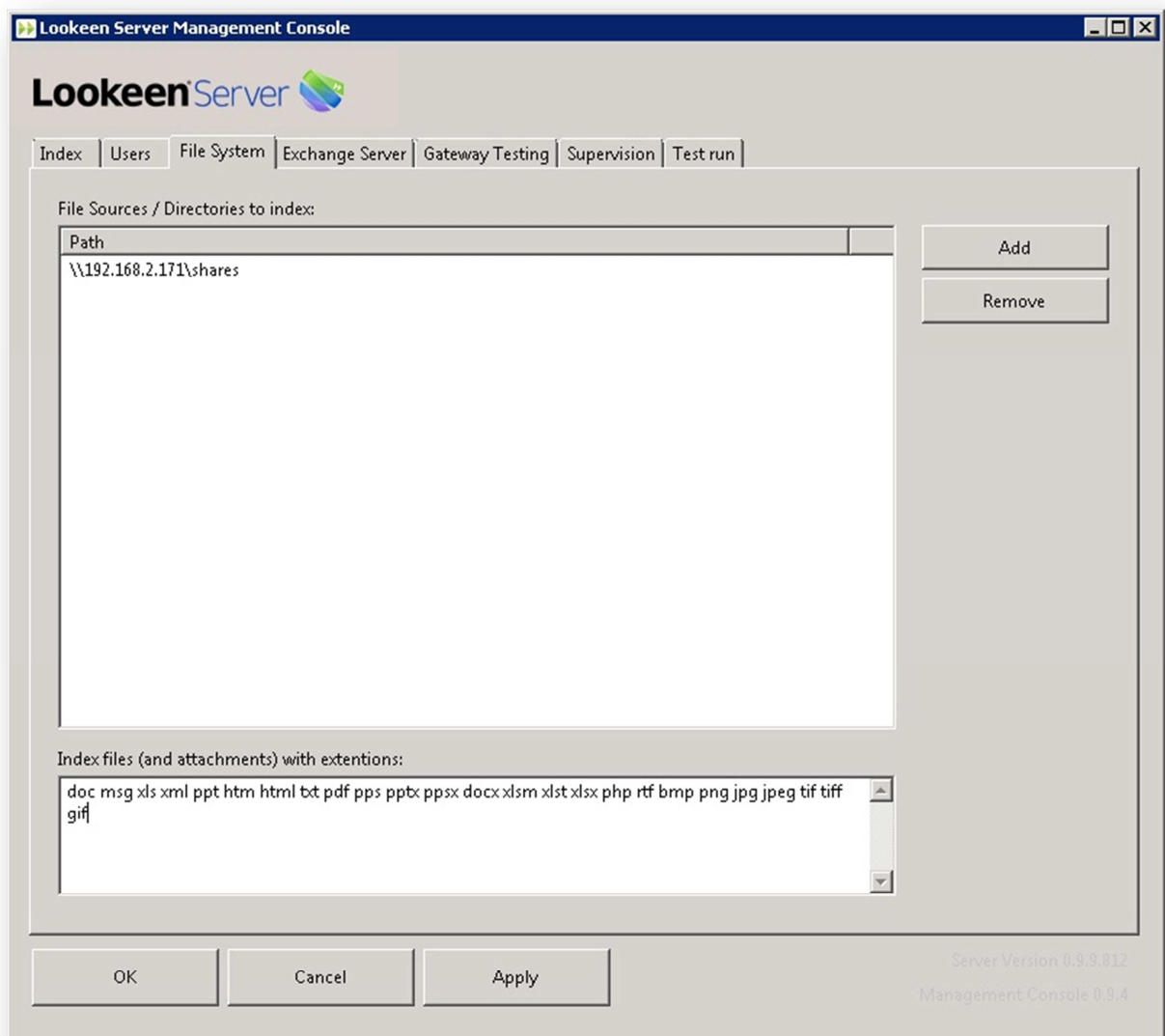
Server Version 0.9.9.612
Management Console 0.9.4

Screen 15 - Include and Exclude Users

e) Add local files to your Lookeen Server Index

If you want to index Local or Network Files, please add the directories at the “File System” tab. The (optional) file extensions below are also valid for email attachments. Your LIU account (“lookeenserver_acc”) needs at least “read”-access to all directories that should be indexed by the Lookeen Server. Otherwise the NTFS permissions deny the indexing process.

Important: Please make sure that you have specified extensions below. Otherwise no attachments or files will be indexed.



Screen 16 - Add local files to your Lookeen Server Index

f) Exclude folders from index (optional)

In the LSMC at the “Exchange Server” tab you can blacklist public- or inbox folders. These blacklisted folders will be skipped by the indexing process.

*Example: “folder1; folder number 2; *folder3;”*

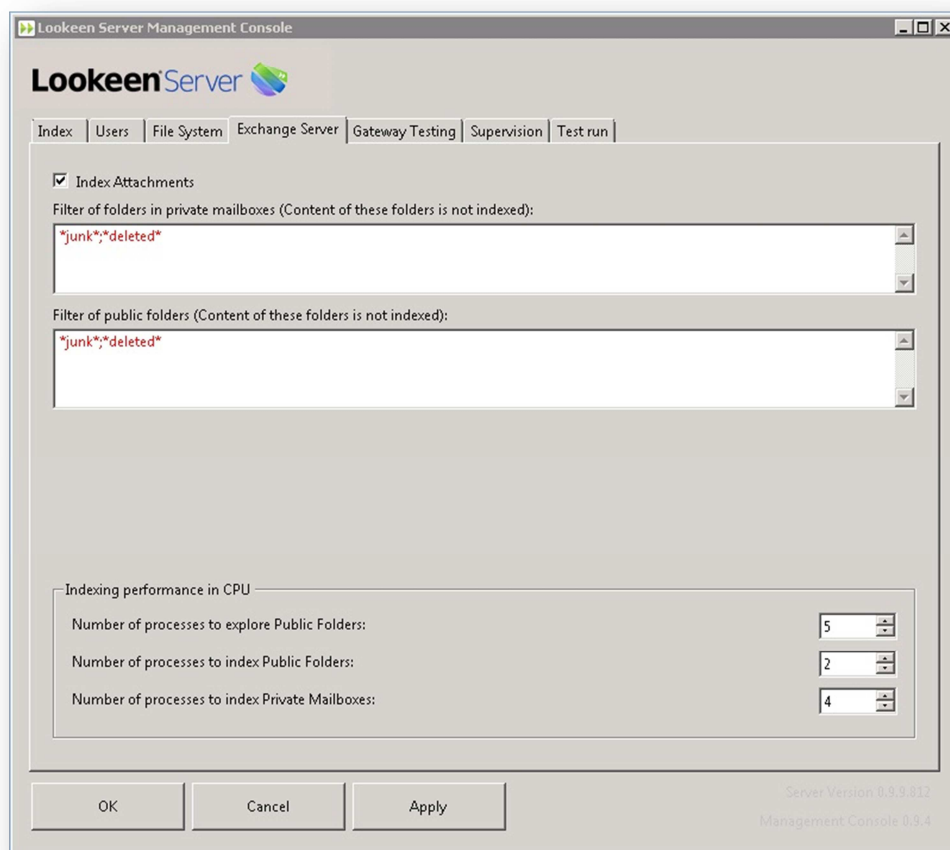
You can also invert the filter by using the “DONT:”- statement. That allows you to index only the specified ones:

For example: “DONT:folder1” → indexes only “folder1”

Important: Yes, this might sound a little bit complicated: *This DONT is an actual DO.* If you only want to index one or several specified folder, use the “DONT” function followed by the folder name.

g) Disable attachment indexing (optional)

In the LSMC, at the “Exchange Server” tab, you can disable attachment indexing completely.



Screen 17 - Disable attachment indexing (optional)

h) Test your LSGW and your Index

The LSMC provides a testing area where you can test the functionality of the current system state. After configuring the gateway URL and the user credentials of the user you want to test, you can simulate and execute search requests as different Lookeen client users. The searcher in this frontend is testing both the local index *and* the gateway. Because of that, you should get duplicates in your search result: One item direct from the index and one item through the gateway.

Lookeen Server Management Console

LookeenServer

Index | Users | File System | Exchange Server | **Gateway Testing** | Supervision | Test run

☐ Use default credentials for test search

Credentials

Test-User: user1 Password: Password Domain: <your Domain>

Search string ("All" to see all results): All Results: 1000 Search Check Connection

Test results:

Type	Gateway	Date	Modified	Subject	Body	File	Path	Users	LID	Store
File	by direct access	29.09.2...	07.10.2...	Lookee...	Axonic ...	Lookee...	\\192.1...			\\192.1...
File	by direct access	29.09.2...	07.10.2...	Lookee...	Axonic ...	Lookee...	\\192.1...			\\192.1...
File	by direct access	29.09.2...	07.10.2...	Lookee...	Axonic ...	Lookee...	\\192.1...			\\192.1...
File	by direct access	29.09.2...	07.10.2...	Lookee...	Axonic ...	Lookee...	\\192.1...			\\192.1...
File	by direct access	27.09.2...	07.10.2...	Lookee...	Axonic ...	Lookee...	\\192.1...			\\192.1...
File	by direct access	27.09.2...	07.10.2...	Lookee...	Axonic ...	Lookee...	\\192.1...			\\192.1...
File	by direct access	26.09.2...	07.10.2...	Lookee...	Axonic ...	Lookee...	\\192.1...			\\192.1...
File	by direct access	02.09.2...	02.09.2...	sbilic.txt	sbilic	sbilic.txt	\\192.1...			\\192.1...
File	by direct access	02.09.2...	02.09.2...	sbilic - ...	sbilic	sbilic - ...	\\192.1...			\\192.1...
File	by direct access	02.09.2...	02.09.2...	sbilic - ...	sbilic	sbilic - ...	\\192.1...			\\192.1...

Search directly: 55 hits. Time: 93,8ms
 Search via Gateway: 55 hits (limited results). Time: 109,4ms. Call time LS (in ms): 55 in 46,9 + 0,0 + 15,6 + 0,0=62,5308

OK Cancel Apply

Server Version 0.9.9.812
 Management Console 0.9.4

Screen 18 - Gateway Testing

6. Running the Server

The Lookeen Server was designed to run over a very long period of time with a high volume of data, folders and files. You might want to test the server with a reduced amount of users and a reduced amount of data before running in production mode. For this, the Lookeen Server has a “test mode”.

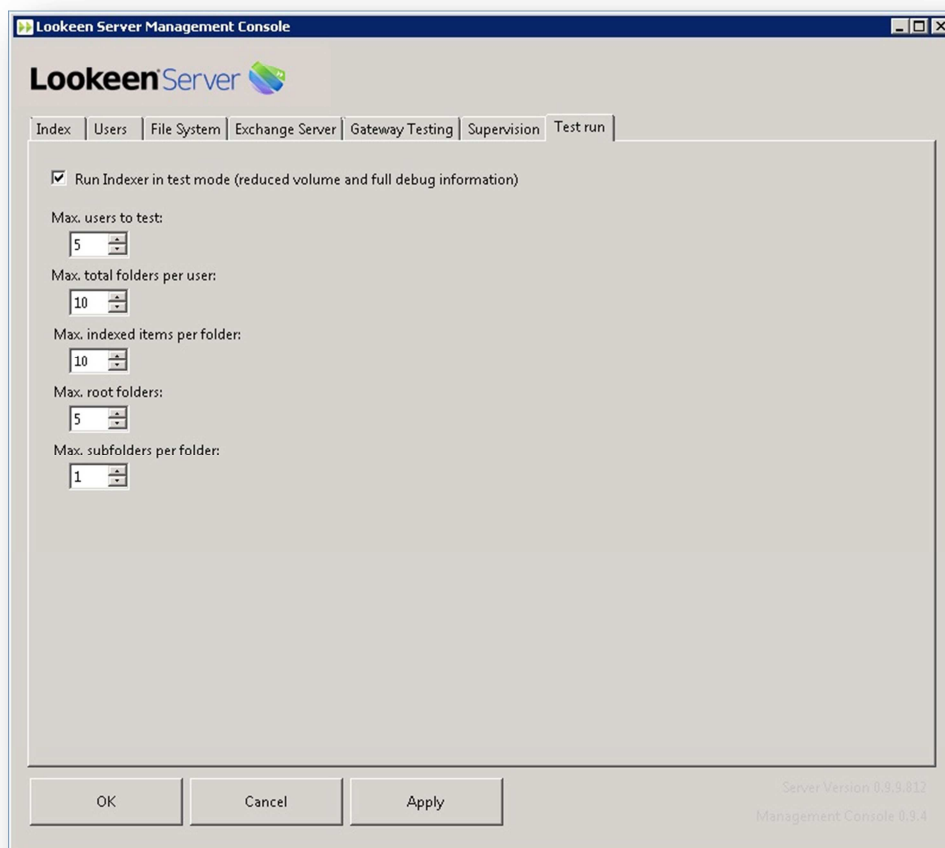
a) Test Mode

After you have installed and configured the server and added all data sources, you can start a test run. Therefore you can check the flag “Run Indexer in test mode” in the LSMC. At this tab you can choose how many users, items, folders and subfolders should be indexed.

To make sure you get all log entries, please create a “debug.txt” file in your LBD folder.

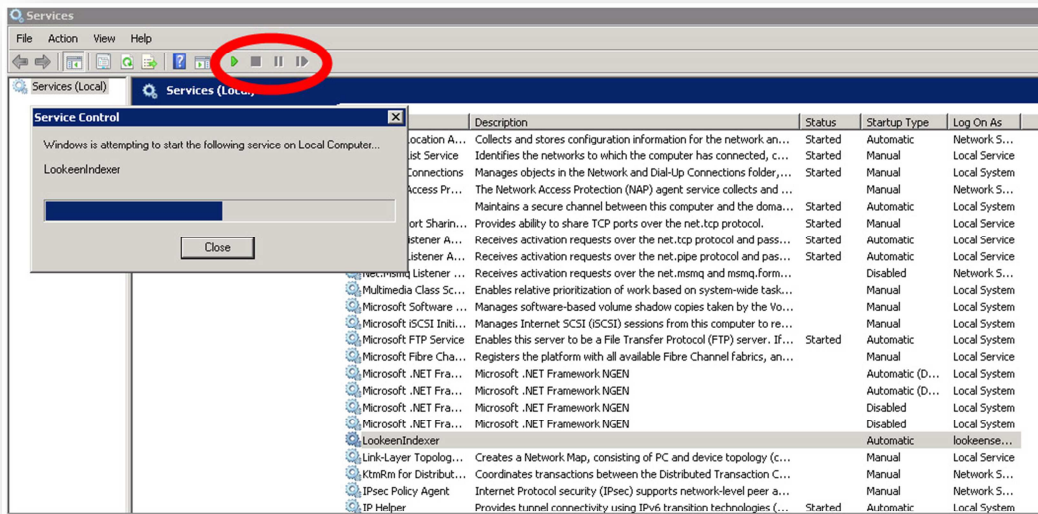
Example: “C:\Lookeen Server\debug.txt”

Important: Please remove this file after your test run. Otherwise your log files will get very big.



Screen 19 - Running the Server - Test Mode

Then you can start the indexing service in the Windows service panel.



Screen 20 - Starting the indexing service

Please go back to chapter “4.7.h” to test your settings in the LSMC. If everything is configured correctly, the number of indexed items should be constantly increasing. If you get no result or an error in the LSMC, please read the FAQs for a list of common errors.

b) Production Mode

After you have tested the server you can uncheck the “test run” flag in the LSMC to run the server in full production mode.

Important: Please remove your debug.txt in your LBD. Otherwise your log files will get very big.

Use the service startup, type “Automatic” to prevent the index from getting out of date after system restarts.

If you have no index yet, the Lookeen Server starts a “full indexing”. The indexer does this until every store is indexed one time. Every next round, the indexer only indexes the delta data, which is called “delta-indexing”. The first index run takes much more time than the *delta indexing* runs where only the new data will be indexed.

Please note: Changing the settings while running services will have no effect. Changes in the LSMC will take effect after the indexer restart. Make sure the first index run is finished. Otherwise the index will be deleted the next time. When the service is stopped, indexing is also stopped; all the changes of the current run will be lost. You can restart the server again, and the server will start indexing from the beginning.

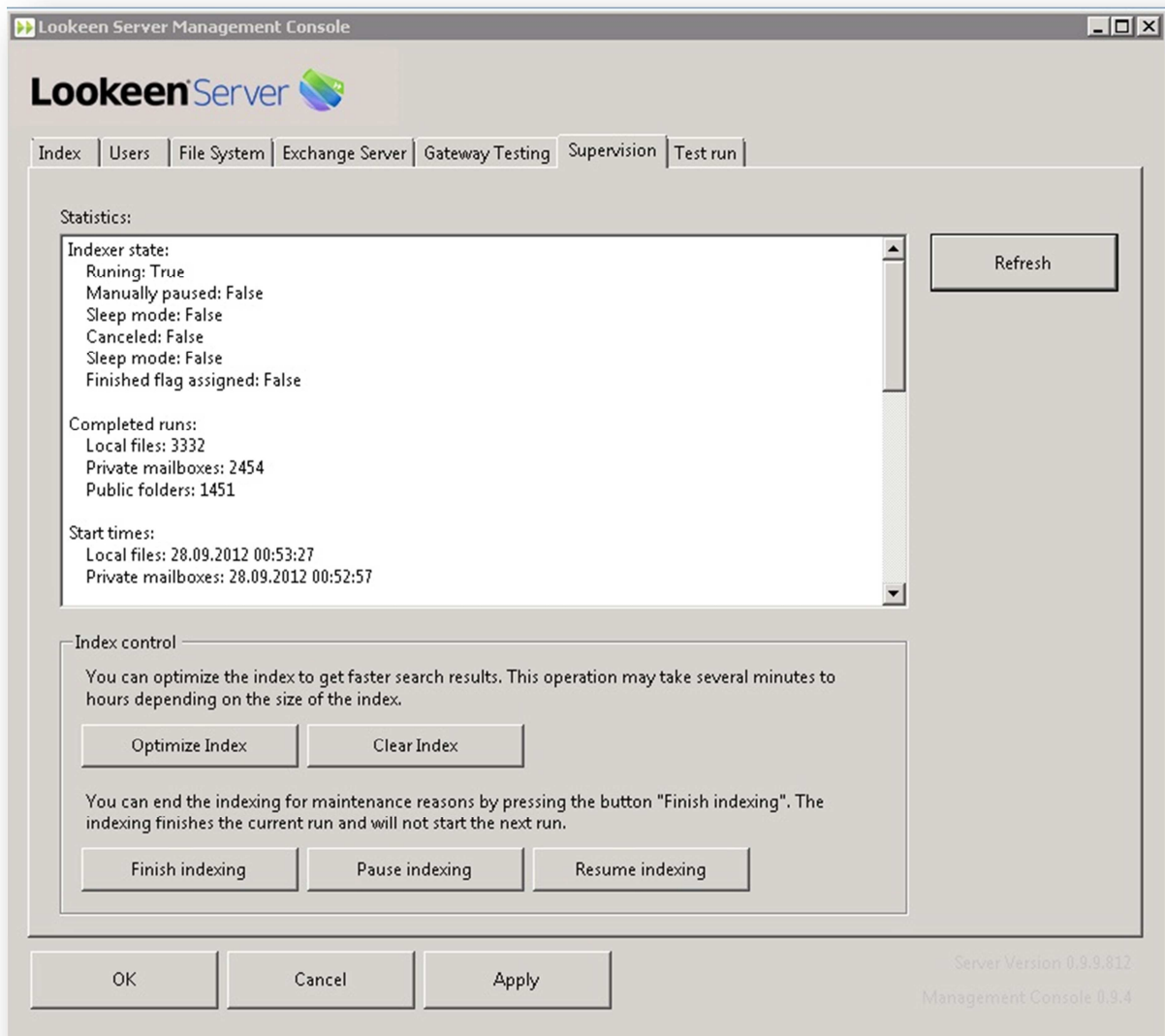
To clear the complete index, please stop the index service and “clear” the Index at the Supervision Tab in your LSMC.

7. Supervision of the Index

You have full access to the indexer state at any time. You also have actions to finish the running indexer process “softly” (for planned maintenance reasons) and to pause the index. After your indexing process is finished, you need to restart the windows service to start the process again. If you only pause the process you can continue the indexing with the “resume indexing” button.

Pausing indexing: Pause as soon as possible

Finish indexing: Stop after the current run



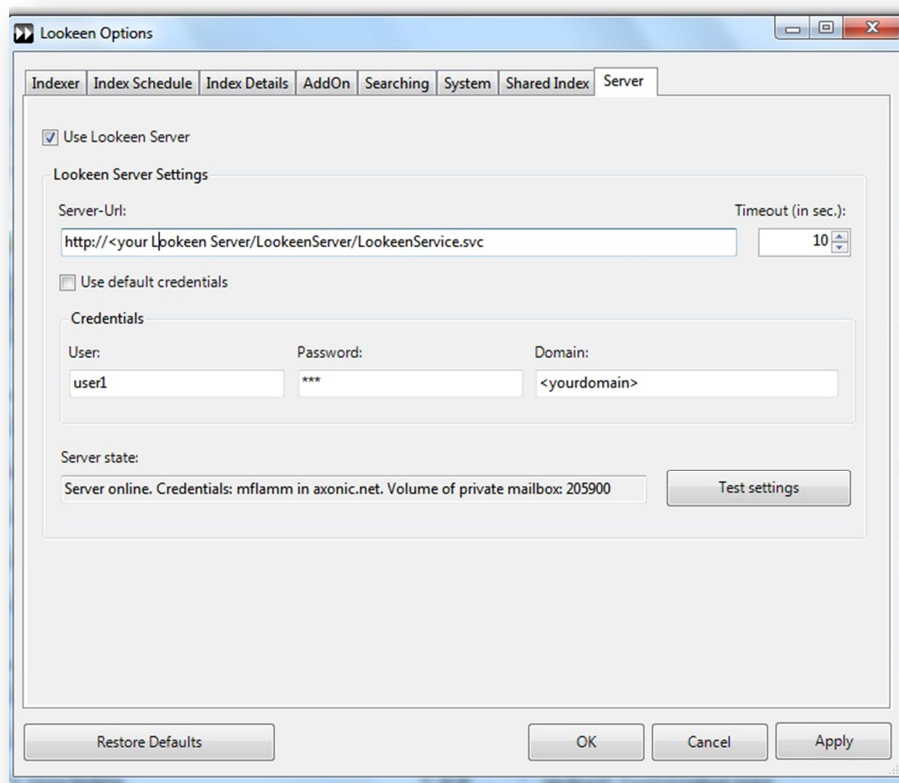
Screen 21 - Supervision

8. Connection to the Lookeen clients

You have the possibility to configure your Lookeen clients either with or without Group Policies.

8.1 Configuration of the Lookeen Client without Group Policies

1. Go to the Lookeen Options and select the “Server” tab.
2. Check the Lookeen Server checkbox.
3. Enter the LS Gateway URL into the Server-URL textbox. See the “Setup LS Gateway” chapter for additional information.
4. (Optional) If gateway authentication is needed, manually enter user name and domain
Set user and domain.
5. (Optional) Set timeout to abort search with the Lookeen Server if the LSGW does not respond.



Screen 22 - Lookeen clients configuration

8.2 Configuration of the Lookeen Client with Group Policy

To configure your Lookeen clients without touching each computer manually, you can use group policies. There are four policies to configure the client. For additional information, please see our [Lookeen Group Policy Guide](#).

a) Enable Server (LS1)

This key activates or deactivates the Lookeen Server buttons.

b) Set the Gateway URL (LS2)

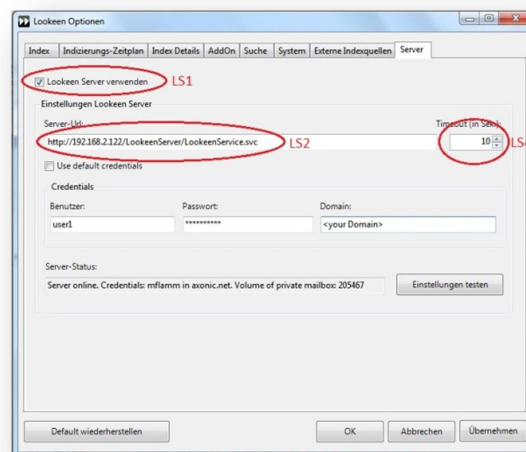
This key sets the Lookeen Server URL in Lookeen. If you don't know the URL, please take a look at section 4.6.c in this Document.

c) Set the Settings read only (LS3)

If you set this key, all buttons are grey and disabled to prevent user changes.

d) Set Server timeout (LS4)

This key defined the timeout in seconds until Lookeen cancels the search request.



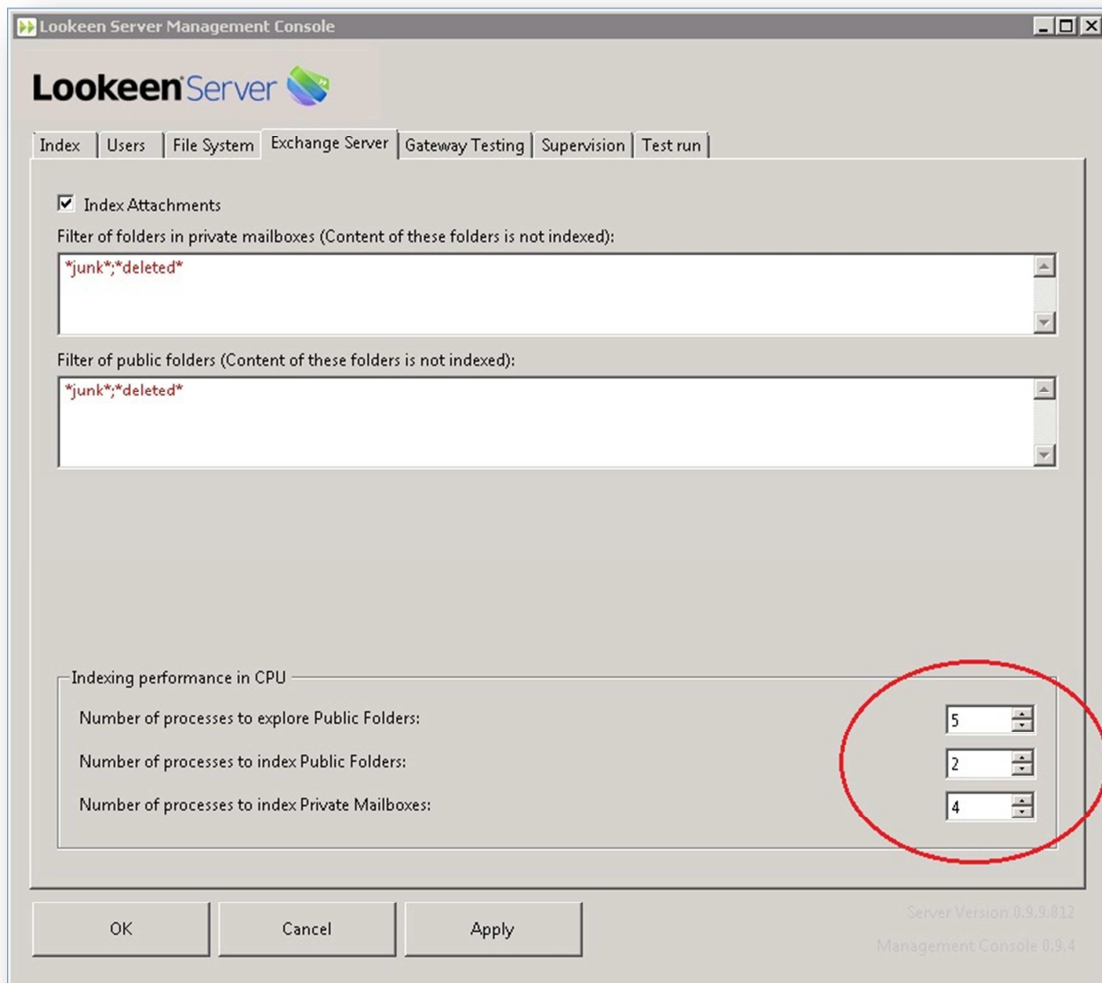
Screen 23 - Lookeen client configuration with Group Policy

Name	Type	Data
(Default)	REG_SZ	(value not set)
LS1	REG_SZ	1
LS2	REG_SZ	http://<yout Lookeen Server>/LookeenServer/LookeenService.svc
LS3	REG_SZ	1
LS4	REG_SZ	30

Screen 24 - Lookeen client configuration with Group Policy

9. Increase the Indexer Performance

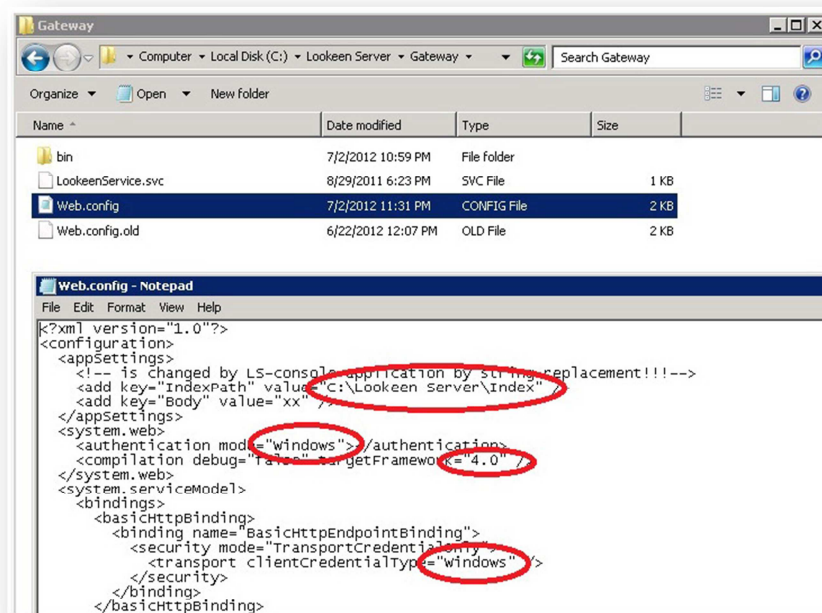
The three indexer sources Public Folder (PF), private mailboxes (PM), and local files (LF) are already running simultaneously. The Lookeen indexer allows running several independent “worker”-instances for Exchange Server Indexing. Depending on the performance of your system, you can choose how many instances you want to run parallel.



Screen 25 - Increase the Lookeen Server Performance

10.FAQs

1. Are the indices of blacklisted users automatically deleted, when they weren't originally blacklisted?
 - Yes, in the next indexer round.
2. My server is „online“, but my search result is always empty.
 - Please reset your gateway path in your LSMC.
3. I would like to move my index to another drive, what do I have to do?
 - Stop your indexer service and copy your index folder to the new location. Reset the gateway path in the LSMC to make sure the gateway application uses the new location for the index. Start your indexer service.
4. I get the following error message in the LSMC: “Server not ready: Client found file type 'text/html; charset=utf-8', expected 'text/xml'.”
 - Please check your “web.config” file, in the Gateway folder. Compare the red circled areas with you configuration. Ensure that Windows authentication is enabled and the correct target framework configured. Check if the index path is the correct one.



Screen 26 - web.config settings

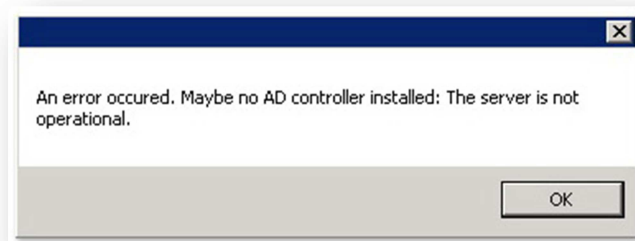
5. I get the following error message in the LSMC: “Server not ready: The request failed with HTTP-Status 401: Unauthorized.”

- Ensure your IIS-Module “Windows authentication” is installed and enabled.

6. I can’t find ASP.Net v4.0 App Pool.

- You probably have installed the ASP.net before the IIS role was available
- To re-register ASP.Net v4.0 in your IIS, go into your framework folder and type the following to your command shell.
 - `C:\Windows\Microsoft.NET\Framework64\v4.0.30319\aspnet_regiis.exe -ir`

7. When I start the Lookeen management console, I get the following message:



Screen 27 - Error message

- Please log in as a domain account. With a local account the LSMC can’t collect the AD User.

11. Glossary

Abbreviation		Functionality
LIS	Lookeen Indexer Service	A Windows service. The LIS has to be created by the administrator. Example name: LookeenIndexer0
LSMC	Lookeen Server Management Console	A Windows application used to configurate the server settings. Location: %LookeenServerRoot%/ManagementConsole/ LSManagementConsole.exe
LSGW	Lookeen Gateway	Access point URL for Lookeen clients
LF	Local Files	Represents the network or local files you want to index.
PF	Public Folders	Represents the public folders on the Exchange Server you want to index.
PM	Private Mailbox	Represents all user specific data like calendar, notes, inbox, etc.
LIU	Lookeen Indexing User	User for all indexing actions of Lookeen Server. The LIU needs impersonalisation rights for all users who are going to be indexed.
LRD	LOOKEEN ROOT DIRECTORY	Installation folder of Lookeen Server. All resources and files are located within this folder or on of its subfolders. Note: The index data need not to be in this folder but in a separate directory.
User Impersonation permission		Gives the caller (in this case the LIU) the ability to submit an impersonation call through the Client Access Server. This does not mean that the caller has permission to access any particular account. Permission to impersonate on a server is set on the security descriptor of the server object in Active Directory. The calling account cannot be a member of any administrator group. This permission is explicitly denied to those groups.

12.Trademarks

“Axonic” and “Lookeen” are registered trademarks of Axonic Informationssysteme GmbH.

“Microsoft Windows”, “Exchange Server” and “Outlook” are registered trademarks of Microsoft Corporation.